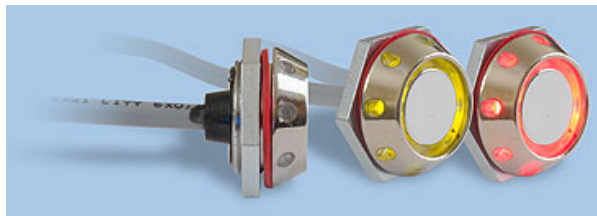


OM-iButton Sensor

The *Premier Sensor*
for the Employee Remote Attendance & Monitoring

Omatics
ready to respond



M61 - OM-i-Button Sensor

Technical Specifications

- iButton Sensor with bicolor LED
- Chromium Plated Steel material
- Metal Casing, M20 thread
- Rear connection Nut
- Waterproof

OM-iButton – Model M61: is a tool to record and manage employee attendance. OM-iButton does more; it allows remote operator to retrieve attending report and can also trigger email alert with date and time of attendance. If fitted on the moving asset then it can record current location name too!

Setup sensor in the place where your staff usually enters and leave work. Mount on the wall, door, dashboard or any area convenient as sensor will always remain secure with back nut in place behind the wall.

OM-iButton sensor is specially designed to be used with Dallas iButton keys. Data on touch of iButton key to the OM-iButton sensor is transmitted through Omatics OMU-27G GPS/GPRS unit and recorded on remote server for client access.



Only iButton key containing unique ID registered on OMU27G GPS/GPRS unit will get recorded remotely. Staff name/ID number can be allocated against this which makes it easier for client to retrieve individual time sheet based on name/ID number.



New Multi-Driver log feature added

Users will now be able to create multi-drivers for the account, select vehicle and assign operator from the saved list, anytime of the day. Monitoring team will then be able to retrieve [Driver Report](#) to find out which vehicle(s) were driven, at any given date/time range. Multi-Driver feature is available under “**Operator**” section from our “**Assets**” menu. Use of **iButton key** by driver is necessary to make this new feature effective.

Optional: iButton can also be wired in such a way that vehicle will only start if iButton key is placed on the iButton sensor. Please contact technical@omaticsGPS.com for more information.

OmaticsGPS
sales@omaticsGPS.com
www.omaticsGPS.com